

NEW THEATRE
OUTSIDE THE BOX

PRESENTS

THE next STAGE

A SHOWCASE OF NEW WORK
BY BOSTON PLAYWRIGHTS

TUESDAY, MAY 12, 2015

BOSTON PLAYWRIGHTS' THEATRE
BOSTON, MASSACHUSETTS

NOTES

ROSALIND THOMAS-CLARK, *Artistic Director*

Who would have thought that another shoal of extraordinary plays would come out of this ocean of writing wherein swim these hungry playwrights from TC Squared? This makes our twelfth reading of new work since 2008, and I am proud to say we have formulated a structure that works to assist in developing these inspirational writers and allows them to be both passionate and vulnerable. This takes hard work, anguish, and no small amount of trepidation, as it is both scary and energizing to see one's work on stage.

None of this would be possible without the undying persistence of Marty Kingsbury, whose unending support and fine tuning, pushing and pulling and constant inquiry make this group what it is: a table surrounded by writers who are vibrant, ever-questioning, always supportive—risk-takers prepared to be vulnerable—and who allow their characters to show up and take part in the play, even when they might not be expected...or even welcome.

Another piece of this special experience is the group of directors and actors who donate their time to this project because they see the value of discovering these texts. Without new writing, the arts would become stale and predictable. We need to feel the surge of something unique, exploring land hitherto untraveled. We want to continue to contribute to opening awareness for subjects rarely seen on stage and encouraging social change in our communities.

What about you, the audience member? Without you, there is no theatre. Theatre must communicate, and we encourage your feedback. Without evaluation and reflection there can be no going forward. These plays are, by definition, Works in Progress, and they will continue to change and grow. Please share with us your response, and talk to us afterwards. We applaud you for coming to support TC Squared!

MARTY KINGSBURY, *Dramaturg*

For our second year, the playwrights gather at Ros's kitchen table on Saturday morning to write and read each other's writing, to find comfort among her plants and the courage to write these stories. Do we work on what is safe or do we take risks? Do we reveal something wild, unstable, even crazy? These questions are not as obvious as they may seem. Taking risks means just that: it means being not "nice," not "feminine," not "safe."

Jecenia, for instance, wonders about a politician's wife who decides to find her own life despite the risks to her husband's political career. Emilia grapples with a little girl whose father lives his own life according to free will. Jess wants to conjure the magic of invisible friends. Sabina could have played it safe, but decided to explore what it means to be a "savior." Is there sympathy, humor, pathos in these characters? Or do we shrug them aside as "crazy?" Is the protagonist in all of us, or is it unique to this character? This moment?

We grapple with these questions week after week. It's the fun of the work. Christina brings crackers and cheese. We share fruit, chocolate. We read. We talk. We go around and around. Gideon wants to trust that an audience will journey with him to the "Under." Christina understands all too well the damage of casinos to the Chinese community. Every year Raiza takes on another global idea in a ten-minute play. This year she searches for humanity in a terrifying war.

Plays aren't built in a day. They are cobbled together by questions, doubts, and determination. They stumble and get rebuilt in the hands of actors and directors. And then we go back to Ros's kitchen table and start again. We thank you for your participation in this journey to find the heart of these new plays.

PROGRAM

SALON D'ÉTE

BY **JESS MULLEN** • DIRECTED BY **PALOMA VALENZUELA**

A woman in her late twenties experiences her independence for the first time. Her dream is to begin a salon in her apartment.

Summer, late 20s Diana Sanchez
Mira, her friend, late 20s Marina Pitombeira
Gail, her neighbor, 40s Jen Doody

SUMMER'S IMAGINARY FRIENDS

Frida Kahlo, a painter Emilia B.
Josephine Baker, a dancer Blyss Cleveland
Jonathan Richman, a musician Sam Duncan

IN TIMES OF WAR

BY **RAIZA CHENG** • DIRECTED BY **NICOLE OLUSANYA**

Two women dive into a final group assignment for school and become embroiled in the Middle East conflict.

Hilary, 20s Laura Menzie
Sonia, 20s Blyss Cleveland

HOW I BECAME A SAXOPHONE

BY **GIDEON BAUTISTA** • DIRECTED BY **MARTY KINGSBURY**

Upon the death of his grandmother, Orf struggles with the meaning of life, poetry, and the history of the Philippines.

Filipino/American TV Personality, 20s Kelly Conrad
Orf, 20s Danny Mourino
Odie, ageless Josh Santora
Lola Calli, Orf's grandmother Lynne Hall
Tennessee Estes, ageless David Castillo

There will be a ten-minute intermission.

PROGRAM

STIR FRYING MAHJONG

BY **CHRISTINA CHAN** • DIRECTED BY **ELYAS HARRIS**

A Chinese female TV chef wrestles with fame, a Tiger Mom, and gambling.

Camera Operator/Producer Alexander Castillo-Núñez

Winnie Tang, 40 Pearl Shin

Mama Tang, Winnie's mom, 60 Magda Spasiano

Henry Tang, Winnie's cousin, 40 Tony Soohoo

KARMIC DISCRETIONS

BY **JECENIA FIGUEROA** • DIRECTED BY **ROSALIND THOMAS-CLARK**

A wife of a politician discovers that her husband has been cheating on her. She decides to make the most of the situation by exploring her own sexual prowess.

Valentina, Sebastian's wife, 30s Inés de la Cruz

Sebastian, mayor, 30s Harry Garo

Suzanna, Sebastian's latest mistress, 20s Jadira Figueroa

Frank, Valentina's family lawyer, 40s Josh Santora

A BRIEF HISTORY OF MINE

BY **EMILIA B.** • DIRECTED BY **ALEXANDER CASTILLO-NUÑEZ**

A young child tries to understand why her father is so different from other fathers.

Luz, 6 Patricia Mata

Papi, her father Daniel Boudreau

Trueno, 6 David Castillo

PINKY SWEARS AND COFFEE CUPS

by **SABINA LINDSEY** • directed by **ROSALIND THOMAS-CLARK**

Three roommates cope with death and human frailty.

Courtney, 20s Inés de la Cruz

Lance, 20s Josh Santora

Amelia, 20s Jadira Figueroa

ALL STAGE DIRECTIONS READ BY

KERLINE DESIR and **LAURA MENZIE**

CAST AND CREATIVE TEAM



EMILIA B
PLAYWRIGHT/ACTOR



GIDEON BAUTISTA
PLAYWRIGHT



DANIEL BOUDREAU
ACTOR



DAVID CASTILLO
ACTOR



ALEXANDER CASTILLO-NUÑEZ
DIRECTOR



CHRISTINA CHAN
PLAYWRIGHT



RAIZA CHENG
PLAYWRIGHT



LYNN CLARK
PROJECT COORDINATOR



BLYSS CLEVELAND
ACTOR



KELLY CONRAD
ACTOR



INÉS DE LA CRUZ
ACTOR



KERLINE DESIR
ACTOR



JEN DOODY
ACTOR



SAM DUNCAN
ACTOR



JADIRA FIGUEROA
ACTOR



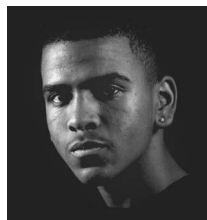
JECENIA FIGUEROA
PLAYWRIGHT



HARRY GARO
ACTOR



LYNNE HALL
ACTOR



ELYAS HARRIS
DIRECTOR



MARTY KINGSBURY
DRAMATURG/DIRECTOR

CAST AND CREATIVE TEAM



SABINA LINDSEY
PLAYWRIGHT



PATRICIA MATA
ACTOR



LAURA MENZIE
ACTOR



DANNY MOURINO
ACTOR



JESS MULLEN
PLAYWRIGHT



NICOLE OLUSANYA
DIRECTOR



MARINA PITOMBEIRA
ACTOR



DIANA SANCHEZ
ACTOR



JOSH SANTORA
ACTOR



PEARL SHIN
ACTOR



TONY SOOHO
ACTOR



MAGDA SPASIANO
ACTOR



PHOTO: Phyllis Bretholtz

ROSALIND THOMAS-CLARK
DIRECTOR



PALOMA VALENZUELA
DIRECTOR

CAST AND CREATIVE TEAM

EMILIA B., *Playwright/Actor*

Emilia and her family immigrated to the United States from Costa Rica when she was eleven years old. She drove up the East Coast, met Mickey Mouse in Orlando, was asked on her first date in Georgia, and saw her first snowfall in Massachusetts. Settling down in Boston, she graduated in theatre from Boston Arts Academy and moved to Los Angeles to pursue acting for ten years. Emilia realized her love for writing, moved back to Boston, and joined TC Squared's playwriting class. Now the moment has come to share her work! Emilia would like to thank Marty for being so encouraging, and TC for not letting her quit. And of course, thank you to her dad - the inspiration for her play.

GIDEON BAUTISTA, *Playwright*

Gideon (Emerson College B.A.) is a Filipino-American actor and playwright. He has appeared throughout Boston's fringe scene, most recently the last two summers in Cambridge parks with It's A Fiasco Productions (Bottom, *A Midsummer Night's Dream*; Claudio, *Much Ado About Nothing*) and with Fresh Ink Theatre at the late Factory Theater (Terry, *Handicapping*), as well as with the Gold Dust Orphans, Holland Productions and Apollinaire. He will appear this June in Company One's *Edith Can Shoot Things And Hit Them*, and he plays dozens of characters monthly in *ComedyCazi* at the Comicazi.

DANIEL BOUDREAU, *Actor*

After more than a decade away, Daniel returned to the theater this past June. Since that time he has been blessed to be a part of six local productions. He reemerged as Polonius in *Hamlet* (Wax Wings Productions), and recently completed a run at the Calderwood Pavilion's Deane Hall space in *The Fence* (Second Act Productions). Over the summer he will be playing Solyony in *Three Sisters* at the Wellesley Summer Theater.

DAVID CASTILLO, *Actor*

Currently pursuing a BFA in Acting from Boston University, David is a visual artist, model and actor native to Boston, MA. His Boston University stage credits are *Aurora Borealis '13*, *Changes of Heart*, and *The Adding Machine*. David has participated in Boston's annual One-Minute Play Festival, and is on City Stage Company's KidStage, designed to introduce children to the wondrous world of the performing arts at the Boston Children's Museum. Other theatre credits include *9 Circles of the Inferno* (City Stage Company), *RENT* (Boston Arts Academy) and his work on *The Great War Theatre Project: Messengers of a Bitter Truth* with TC Squared.

ALEXANDER CASTILLO-NUÑEZ, *Director*

Graduating from Boston Arts Academy's theatre class of 2008, Alexander is an actor, photographer/filmmaker, poet and time-travel theorist. Theatre credits include: *House of Blue Leaves* and *Ring Round the Moon* (Boston Arts Academy); *Romeo and Juliet* (Publick Theatre); *Pink Panther Strikes Again* (Salem State University); *Bear Patrol* (Vaquero Playground); *The Sing Song Show* (TC Squared); *Angel Academy* (Berubian Theatre); *27 Tips for Banishing the Blues* (Sleeping Weazel); *Turtles* (Boston Public Works); and *Crime and Punishment* (Salem Theatre). Film credits include: *Broke and By Chance* (Beyond Measure Productions). He was part of the creative ensemble, exploring and developing *The Great War Theatre Project* for TC Squared. This is Alexander's directorial debut for the stage.

CHRISTINA R. CHAN, *Playwright*

Christina is a voice over actor, playwright and director. She is a member of SAG and is Actors Equity Eligible. Christina received her theater training at the Trinity Rep Conservatory, RI, and The Royal National Theater, UK. She is thrilled again to be part of TC Squared's New Works Play Festival. Christina would like to thank Ros, Marty,

CAST AND CREATIVE TEAM

all her fellow playwrights (past and present), and the admin team of TC Squared for their support. She really needed a village to help with developing her play.

RAIZA CHENG, Playwright

Raiza is a Founding Board member of TC Squared, and has been instrumental in building this Boston Arts Academy Alumni Theatre Company. She holds a Bachelor's Degree in Management from the University of Massachusetts, Boston, with a concentration in Finance, and a minor in Economics. While at BAA, she won the Technical Theatre Award, and was credited as Production Manager for several shows. Her most recent script, *In Times of War*, has been developed in the TC Squared Playwrights Lab with dramaturg Marty Kingsbury. Raiza is thrilled to have this opportunity again to showcase her work on stage and to be part of this amazing venture with such a creative and talented ensemble.

LYNN CLARK, Project Coordinator

Lynn has an MBA in non-profit management from Boston University and a BA in art history from Smith College. After working in the private sector for 10 years, she volunteered with TC Squared to reconnect with the non-profit arts, and hasn't looked back. In her role as Project Coordinator, she helped raise the funds to bring *The Great War Theatre Project* to England this summer. She's grateful for the opportunity to work with the dedicated and talented people that are part of this incredible organization.

BLYSS CLEVELAND, Actor

Blyss performed in last year's TC Squared's 10-Minute Play Festival and is happy to be returning to this year's show at the Boston Playwrights' Theatre. She recently performed as: Kate in the Hovey Player's production of *Good People*; Sampson, Peter, and the Apothecary in the Opposite of People's production of *Romeo + Juliet*; and

The Lady in Gold in Pariah Theatre Company's production of *for colored girls who have considered suicide/when the rainbow is enuf*. Her theatre training includes Company One's Professional Development for Actor's class and Acting Shakespeare and Intermediate Acting at Harvard College.

KELLY CONRAD, Actor

Last summer, Kelly starred in *Dancing Wilde* with Boston Actor's Theatre. Kelly studied Theatre Arts at Suffolk University where she performed in many productions, including Wes Savick's *These Seven Sicknesses* and David Gammon's production of *Doctor Faustus*. Kelly is also a proud student of Company One's class: Professional Development for Actors. She would like to thank Ros for introducing her to "the scene", her family across the pond, and Mr. Andy Johnson.

INÉS DE LA CRUZ, Actor

Inés hails from Boston. She has been a member of Escena Latina Teatro (ELT) since 2006, and was recently cast as Luisa in ELT's production of the Spanish play *Entre Mujeres* by Santiago Moncada. She will soon appear as Catalina in the comedic web series *The Pineapple Diaries* by Paloma Valenzuela. She is also an ensemble member of TC Squared Theatre Company's multi-media production *The Great War Theatre Project* and will be in England this June for a ten-day residency of performances and workshops. Inés is thrilled to work again with the talented playwrights and actors for TC Squared's Playwright's Lab.

KERLINE DESIR, Actor

Prior to joining an acting class at Company One, Kerline graduated from the University of Massachusetts, Boston, with a degree in Criminal Justice, and is now working for Suffolk County as a corrections officer. In the acting class, she played several roles, including characters from *Spike Heels*, *Spell Number 7*, and *The Over-*

CAST AND CREATIVE TEAM

whelming. Kerline loves taking on new challenges and is eager to begin auditioning for roles. She is delighted to have this opportunity to work with TC Squared, and looks forward to what the future holds.

JEN DOODY, Actor

Jen is delighted to be on stage alongside former classmates Sam Duncan and Jess Mullen! Her previous roles include Judas in *Jesus Christ Superstar*, multiple roles in *The Laramie Project*, the Baker's Wife in *Into the Woods*, Lady Macbeth in *Macbeth*, and Beatrice in *Much Ado About Nothing*. Many thanks to Jess for introducing her to TC Squared, and to Remo for being a life-changing teacher.

SAM DUNCAN, Actor

Sam is an English tutor at Bunker Hill Community College, while studying to become a teacher. He acts to stay sane and is exceedingly delighted to have this outlet with TC Squared. Sam takes the occasional acting class, notably Acting Shakespeare with Remo Airdi. He was cast in several student films, and as an extra through Stage Source and Boston Casting. He will be studying abroad this summer in Brussels.

JADIRA FIGUEROA, Actor

Jadira's love of theatre began when she was a theatre major at Boston Arts Academy. Acting credits include *Escena Latina Teatro*, *Underground Railway Theatre*, and TC Squared. Her recent stage managing credits include Assistant Stage Manager for *Hidden Faces of Courage*, and Stage Manager for *Vinegar Tom*, TC Squared's *Qui Mo Chic* and *The Great War Theatre Project: Messengers of a Bitter Truth*. She is happily back on stage for this staged reading.

JECENIA FIGUEROA, Playwright

Jecenia is currently a freelance writer in the city of Boston. She has been fortunate enough to be a part of the TC2 Playwrights

Lab for three seasons. Her original work, *Dirty Laundry/Trapos Sucios*, has been presented in both Boston and Providence, and has been translated into Spanish. Her acting credits include the heartbreaking *Mujeres de Arena/Women of Sand and Entre Mujeres*, both directed by Dr. Christina Marin, and *Queseyocuento*, directed by Veronica Wells.

HARRY GARO, Actor

Harry was born in Honduras and graduated in theatre from the Boston Arts Academy, with several lead roles to his name, including *The Language of the Human Race*, *A Soldier's Play* and *Fuente Ovejuna*. He has been working in Boston while taking acting classes, most recently at Company One, where he appeared in the Showcase at the Plaza Theatre in *The MotherF***er with a Hat*, and *The Unloved*. Harry is delighted to be acting with TC Squared, where he is working with several BAA alumni.

LYNNE HALL, Actor

After 27 years working as an educator, Lynne is embarking on a new venture: acting. She has taken the Company One Professional Development for Actors course numerous times. In the showcases, Lynne has played Edna in Paula Vogel's *The Oldest Profession*; Mama in *Night Mother* by Marsha Norman; Miranda in *The Devil Wears Prada* by Aline Brosh McKenna; Eleanor in Tom Stoppard's *Rock 'n' Roll*; Abby in *Arsenic and Old Lace* by Joseph Kesselring; and Vera in *4000 Miles* by Amy Herzog. In TC Squared's Play Festival, Lynne played Lola Calli in Gideon Bautista's *How I Became a Saxophone* and Gabby in Catherine O'Neil's *My Son's Mother*. She played Julie Khan in G.L. Horton's play *Solitude, Silence* in the Playwrights Platform 42nd Summer Festival.
lynnehall43@gmail.com

CAST AND CREATIVE TEAM

ELYAS HARRIS, Director

Ely is a recent graduate from Bucknell University where he appeared in many of the university's theatre and dance performances. He graduated from Boston Arts Academy in 2009 as a theatre major. Some of his acting credits include: *Night Train*, *Bolina*, *Macbeth*, *No Exit*, and *Pride and Prejudice*. Ely was a featured dancer in two Bucknell Dance Company Concerts where he performed *Choreographic Offering* by José Limón. Elyas will travel to England this summer for TC2's *The Great War Theatre Project* residency of performances and workshops.

MARTY KINGSBURY, Dramaturg/ Director

Marty's plays have been produced across the United States, in Sydney, Australia, and London, England. She has been published in numerous magazines and anthologies, including *Fresh! Literary Magazine*, *Telling Our Stories -- Roll*, *The Animal Anthology Project: True Tails*, and *Tough Acts To Follow*. Her novel for young readers has just been published: *Rescuing Oricito, The Almost True Story Of A South American Street Dog*. She teaches English at the Urban College of Boston, and is delighted to work with the talented young voices of TC Squared. As TC Squared's resident dramaturg, she currently leads the Playwriting Lab which is holding this staged reading.

SABINA LINDSEY, Playwright

Sabina Lindsey, born and raised in Boston MA, is excited to be involved in the TC Squared Play Festival once again. A Boston Arts Academy alumna, she is currently enrolled at UMass Boston as a theatre major with a heavy interest in Women's Studies. She has been cast in several shows including *The Vagina Monologues*, *You Can't Take it With You*, *The Ontology Ward*, and *Argyles*. Her play, *Lost Constellations*, was performed as part of TC Squared's Ten-Minute Play Festival in 2014. She hopes to be able to incorporate her love for the unknown and the mystical into her work

with TC Squared. Her belief is that there is never a wrong time for heartfelt work, iced coffee, or red lipstick.

PATRICIA MATA, Actor

Patricia attended Boston Arts Academy as a theatre major, and is currently in school for business administration and bookkeeping. Patricia is also a writer, poet, dancer, feminist, and the mother of two beautiful girls. A member of Company One's Professional Development for Actors class, she continues to pursue her dreams, and is delighted to be a part of TC Squared's Staged Reading.

LAURA MENZIE, Actor

Laura's Boston credits include *Soul Mates* with Boston Actors Theatre, *Songs of the Dragons Flying to the Heavens* with Apollonaire Theatre Company and the IRNE nominated *Nina Variations* with Brown Box Theatre Project. Laura has also worked with Brown Box for *Romeo and Juliet*, *A Midsummer Night's Dream*, *Macbeth*, and two devised collaborations with Icaro Teatro in Queretaro, Mexico. She holds a BA in theatre from Clark University and studied at the Accademia dell'arte. Laura recently appeared as Sasha in *Orlando* with Bad Habits. She will be moving to Houston in the fall to complete a graduate degree in theatre. Laura will travel to England this summer for TC2's *The Great War Theatre Project* residency of performances and workshops.

DANNY MOURINO, Actor

A Boston native and Boston Arts Academy alumnus, Danny made his professional debut in the 2003 Boston Fringe Theatre Festival, performing in *Inner City Blues* with Tri-Cord Productions. Other credits include *Clara's Old Man* at the African American Theatre Festival and *The Last Days of Judas Iscariot* and *Splendor* with Company One. Since 2009, Danny has performed with TC Squared in several Staged Readings, including performances at W.H.A.T.

CAST AND CREATIVE TEAM

(Wellfleet Harbor Actors Theatre) and the Boston Playwrights' Theatre. Currently, Danny is in TC Squared's ensemble for *The Great War Theatre Project*, and is excited to be a part of *The Pineapple Diaries*, a web series which will begin filming in May.

JESS MULLEN, *Playwright*

Jess Mullen (Boston Arts Academy '01) works at Harvard University and the American Repertory Theater, then spends the rest of her time writing. She has participated in the Taos Summer Writing Conference, studied with Francesca Lia Block, and taught English all over France, most recently in Lyon. She started writing *Salon d'Été* as an actor frustrated with the choice of scenes and monologues that passed the Bechdel test. Her stories and essays have appeared in the *Rose Red Review* and the *Kindred Collective*. This is her first play.

NICOLE OLUSANYA, *Director*

Nicole is an arts educator, administrator and actor, and is currently the Arts Director at Dorchester Academy. A co-founder and board member of TC Squared since 2009, Nicole holds an M.Ed in Community Arts from Lesley University, and a BA in Theatre Studies from Emerson College. Nicole's acting roles include Lisa in *Splendor* with Company One, and she was able to watch this script develop through various iterations as she was cast in the scene work and readings that led up to the final production. She has been on the TC2 stage many times before, including performing at W.H.A.T. (Wellfleet Harbor Actors Theatre), and has seen some of these playwrights' scripts develop over several readings. This will be Nicole's first directing role with TC Squared, and she is inspired to see how her original idea for a Playwriting Lab has expanded over the last few years. www.nicoleolusanya.com

MARINA PITOMBEIRA, *Actor*

Marina received her BFA in acting in Brazil in 2010. After graduating, she traveled to the United States to study acting for the camera in Los Angeles. Back in Brazil, she played the lead character on an independent feature film, as well as acting in several plays in theater festivals in Brazil and Argentina, and working as a light designer and producer. Since she moved to Boston in 2014, she has been working on short films, and studying with Marcus Stern and Scott Fielding. She currently lives in Boston and is excited to have the opportunity to work with TC Squared.

DIANA SANCHEZ, *Actor*

Diana most recently enjoyed her role as Isabel in Linda Nieves-Powell's *Nueva Latina Monologues*, presented by P&G's Orgullosa Campaign. In 2013, awarded Best Actress for her role of Carmela in *Papi/Flaco*, part of the Thespis Festival (NYC), Diana was also lead and co-creator of *Series Pilot: Abandoned*, which was submitted to the NY Television Festival. Currently appearing in the Company One Acting Showcase, she has also trained at UMass-Amherst, The Barrow Group (NYC), and has studied Alexander Technique at Primary Stages (NYC). Sanchez has a passion for fitness and wellness. This season you can find her running through the Commons, training for her first 5K.

JOSH SANTORA, *Actor*

Josh, a Jamaica Plain native, is ecstatic to rejoin the theatre community after nearly a decade in other worlds. He began his thespian journey as a theatre major at Boston Arts Academy, where his roles included Egeus in *A Midsummer Night's Dream*; Lt. Byrd in *A Soldier's Story*; Tiger in *Fresh Flags of America*; Matt Galloway and Aaron McKinney in *The Laramie Project*; and multiple roles in *Grand Magic*. Whoopi Goldberg awarded Josh the accolade of Best Male Actor for his role in *The Lost Elevator* at the Emerson

CAST AND CREATIVE TEAM

High School Theatre Festival. He was assistant to director Ros Thomas-Clark for the production of *You Must Not Speak*. Josh is delighted to be a member of the TC Squared Ensemble and will travel to England this summer for TC2's *The Great War Theatre Project* residency of performances and workshops.

PEARL SHIN, Actor

Pearl hails from Nashville, TN, and graduated from Boston College in 2012. She most recently appeared in Company One's production of *The Hindu Gods Trilogy: The Chronicles of Kalki* as Girl 2. She would like to thank Ros for this opportunity and Patricia Riffin for her wisdom and unforgettable instruction.

TONY SOOHOO, Actor

Tony is pleased to be a part of this new play festival with TC Squared Theatre Company. He has played several roles in film and television, including appearing in Fox's *Unfinished Business*. He was cast in commercials for companies such as Staples and Boston Scientific. For the Staged Reading of *Kamioroshi, Descent from the Gods* he played three roles. Tony enjoys playing sports and watching movies.

MAGDA SPASIANO, Actor

Magda is delighted to join the TC2 Staged Reading this year. Magda's credits include *The Cloth from Which We Are Cut* (A Better World), *Train Wrecked* (Roxbury Rep), *Last Days of Judas Iscariot*, *A More Perfect Union* and *In Our Eyes* (Company One). She is a longtime teaching artist in Boston, having worked with Actors' Shakespeare Project (ASP), CitiPerforming Arts Center, Boston Arts Academy, Strand Youth Theater Project and the Boston Center for the Arts. With ASP she recently directed youth productions of *Henry V* and *Romeo and Juliet* (AD).

ROSALIND THOMAS-CLARK, Director

Ros, teacher, actor and director, has worked professionally for stage, radio, and film, but her passion has always been the development of arts and education. She founded several start-up arts organizations in Britain, New Zealand, and the USA, and spent ten years as Chair of Theatre at the Boston Arts Academy. Committed to theatre for social change, she started her own theatre company, TC Squared. Her latest production commemorates the centenary of World War One—*The Great War Theatre Project: Messengers of a Bitter Truth*. This will travel to England in June, performing and working with high school students. She studied with the late Augusto Boal in Brazil, and received Boston's Teacher of the Year Award in 2005, and a SURDNA Artist Colony Grant in 2008. She lives in Cambridge, Massachusetts, near her three children and five grandchildren.

PALOMA VALENZUELA, Director

Paloma is a playwright, director, screenwriter and script editor originally from the city of Boston. After majoring in theater at Boston Arts Academy, she studied dramatic writing at the NYU Tisch Summer Program, and then became a Writing for Film and Television Major at Emerson College. Paloma moved to Santo Domingo, Dominican Republic, her country of origin. Her work there included a Dominican sitcom, *Juanita's Gran Salon y Spa*; writing short films for directors both in Boston and the Dominican Republic; collaborating as script doctor for several Dominican feature films; and teaching drama at a bilingual high school in Santo Domingo. Her company, La Gringa Loca Productions, has produced many of her own plays and films, as well as promotional videos. Paloma is excited to be directing this new work, by playwright Jess Mullen, for the TC Squared Theatre Company.

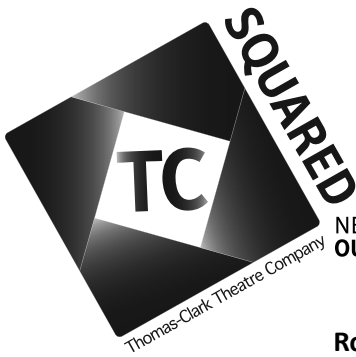


PHOTOS: Phyllis Bretholtz

SPECIAL THANKS to Jay Cottle; 3050 Music Group; Danehy Realty; YWCA Central Square; Ayesha Patel; Emma Seale; Madison Schmidt; Jane Meyers; Emily Norman; Dylan Hayre; Kyle Rosa; Phyllis Bretholtz; Victoria Marsh; and Company One.

PROGRAM DESIGN

Kelly Mastracchio



NEW THEATRE
OUTSIDE THE BOX

Rosalind Thomas-Clark

ARTISTIC DIRECTOR

FOUNDING BOARD MEMBERS

Erika Cesar

Raiza Cheng

Gabriella Ciambrone

Nikki Prefontaine (Nicole Olusanya)

EXECUTIVE BOARD MEMBERS

Raiza Cheng

Elyas Harris

Jay Cottle

Nicole Olusanya

Jadira Figueroa

HONORARY BOARD MEMBERS

John ADEkoje

Marty Kingsbury

Kathi Aguero

Shawn LaCount

Abdi Ali

Dan Lombardo

Phyllis Bretholtz

Victoria Marsh

Fernadina Chan

Linda Nathan

Iris Fanger

Juanita Rodrigues

Peter Gould

Margie Schaffel

Kirsten Greenidge

Susan Werbe

tc2theatrecompany@gmail.com

www.tcsquaredtheatrecompany.org

Our role is to mentor Boston-based artists and reach diverse audiences. We want to challenge opinions and push artistic boundaries through socially relevant theatre.